

# Product Catalog.

T O P  
S E L L E R S

2023-2024

SLYDE INNOVATIONS



# About Slyde

Welcome to the world of Slyde Innovations, where we're all about shaking up the traditional office vibe. Picture this: a place where the daily grind isn't so grindy, where creatives, engineers, and sales gurus all mingle like they're at the coolest party in town — which just so happens to be at the office. Imagine bumping into your next mentor while grabbing a coffee or sparking a project idea with someone you just met at the lunch table. Sounds a little too good to be true, right?

Well, at Slyde, we're busy turning that dream into a reality, one innovative product at a time. We believe that your office should be as flexible and dynamic as you are, filled with tools that are not just functional but fun! Who says storage has to be stashed away in the stock room? Not us! We're all about creating spaces that look good and feel even better, making every day a bit more enjoyable.

From Our Brain to Yours.

We're super lucky to have a front-row seat to the ever-changing office landscape and even luckier to have a hand in shaping it. Our secret sauce? Listening to you! Our greatest hits in product design have come straight from our clients' feedback, turning "ouch" points into "aha!" moments.

We're all ears, always on the hunt for the next big challenge. Got a workspace conundrum? Hit us up — we love a good puzzle.

Let's Make Magic Happen.

Got a vision for a workspace that breaks all the rules? We're here for it. Let's team up to make your office a place where work feels a little less like work and a lot more like play. Drop us a line, and let's start cooking up some ideas.

Your next office adventure starts with Slyde Innovations. Let's create something amazing together!

---

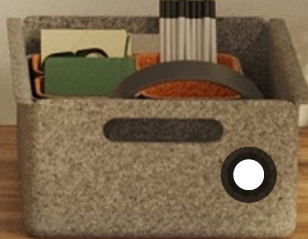
# SLYDE INNOVATIONS

## ACCESSORIES



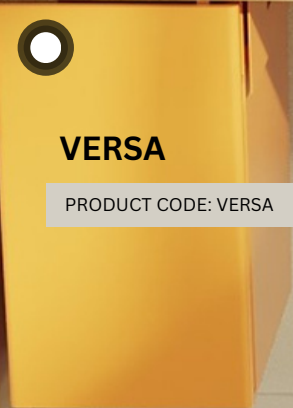
### TOTEM ESSENTIALS

PRODUCT CODE: TOTE



### VERSA

PRODUCT CODE: VERSA



PRODUCT CODE: DRWES

**ESSENTIALS  
LAPTOP DRAWER**



PRODUCT CODE: SC-W

**SYDECAR**



## DIVYDE 2.0

Workstation divider & organizer

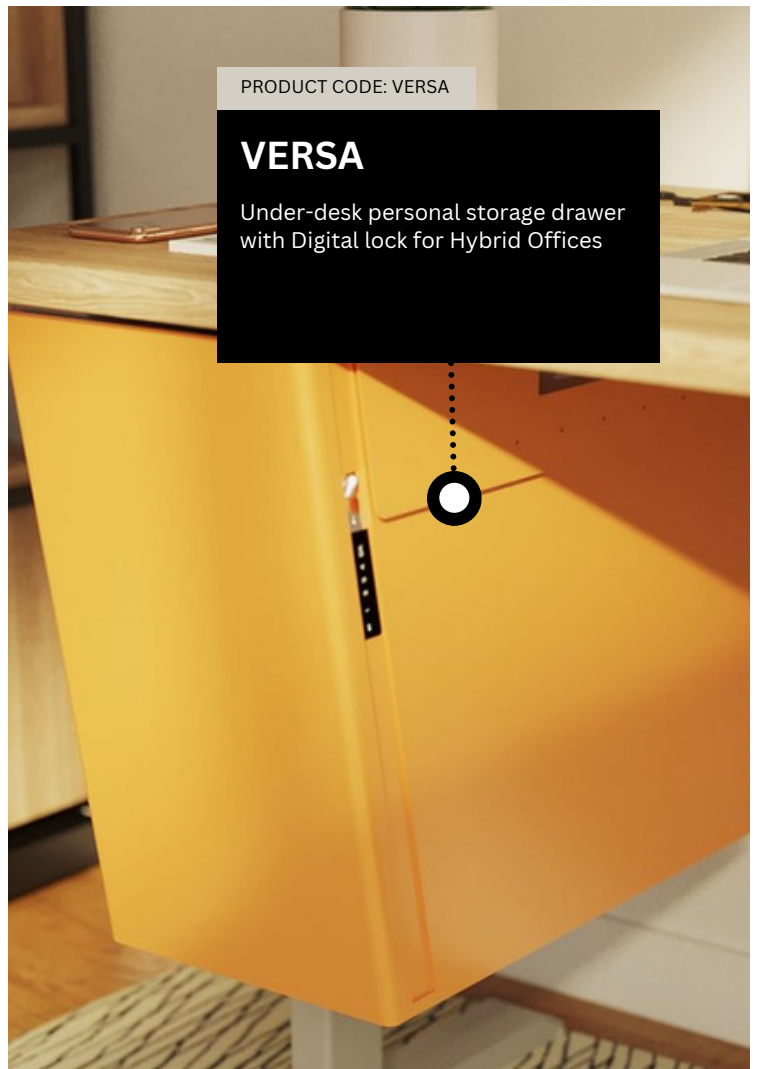
PRODUCT CODE: DIV-2



PRODUCT CODE: VERSA

## VERSA

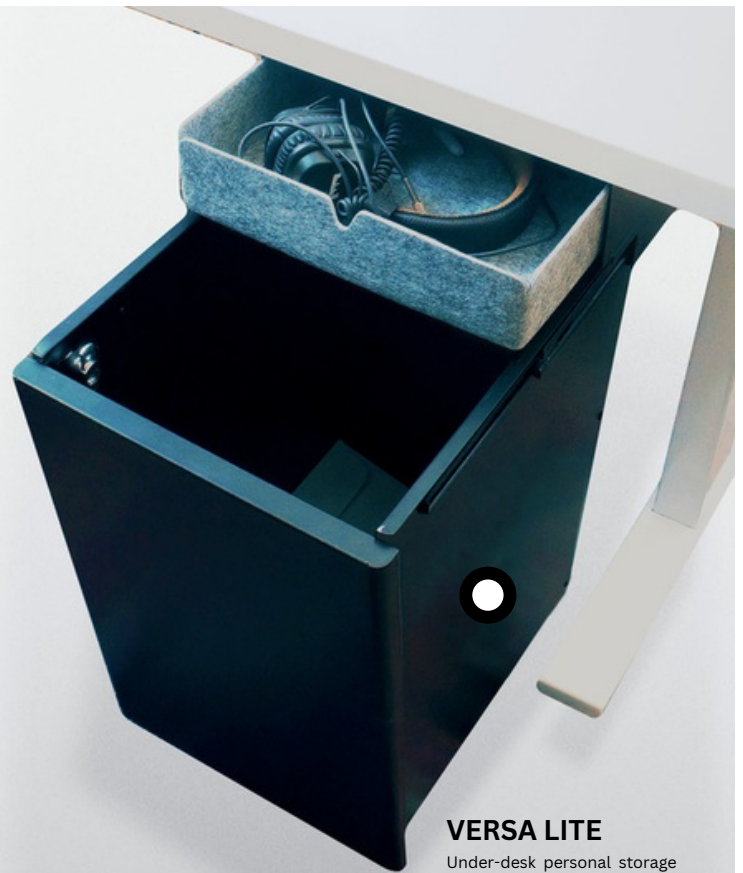
Under-desk personal storage drawer with Digital lock for Hybrid Offices



PRODUCT CODE: DIV

## DIVYDE

Desktop organizer & charging station



## VERSA LITE

Under-desk personal storage drawer with removable caddy

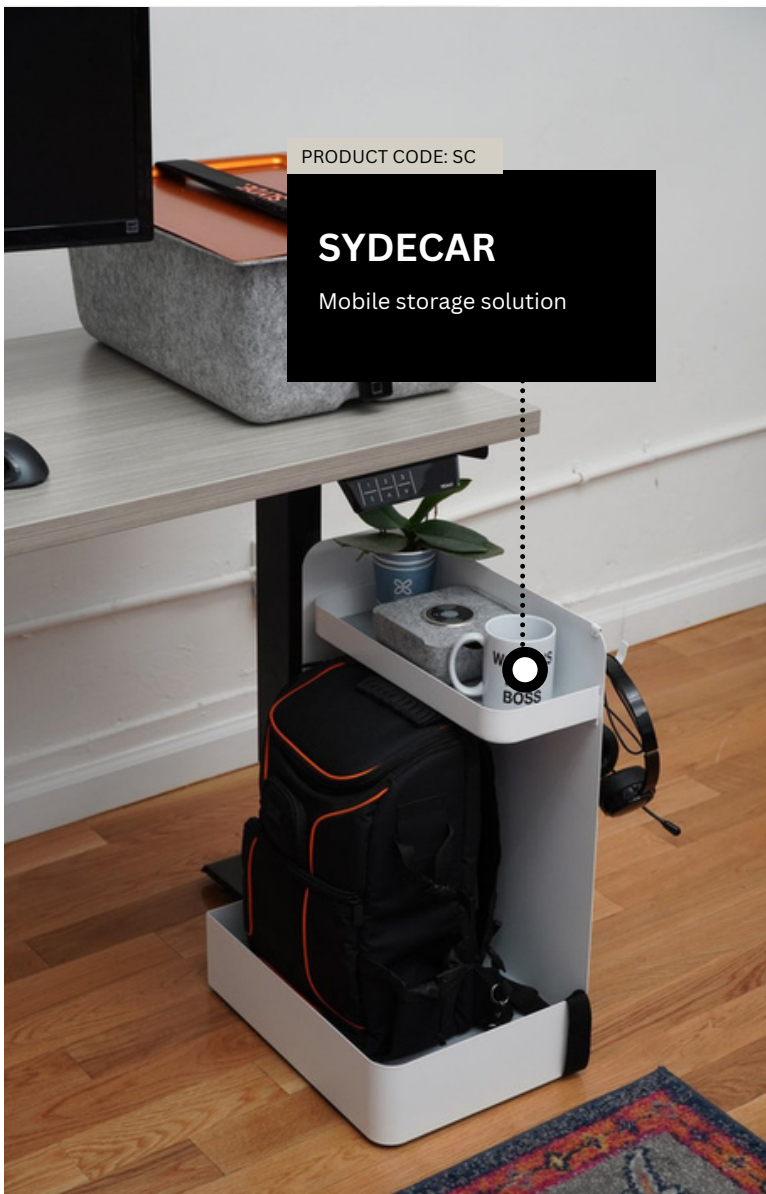
PRODUCT CODE: VERSAL



### ESSENTIALS LAPTOP DRAWER

Easy, attachable laptop storage

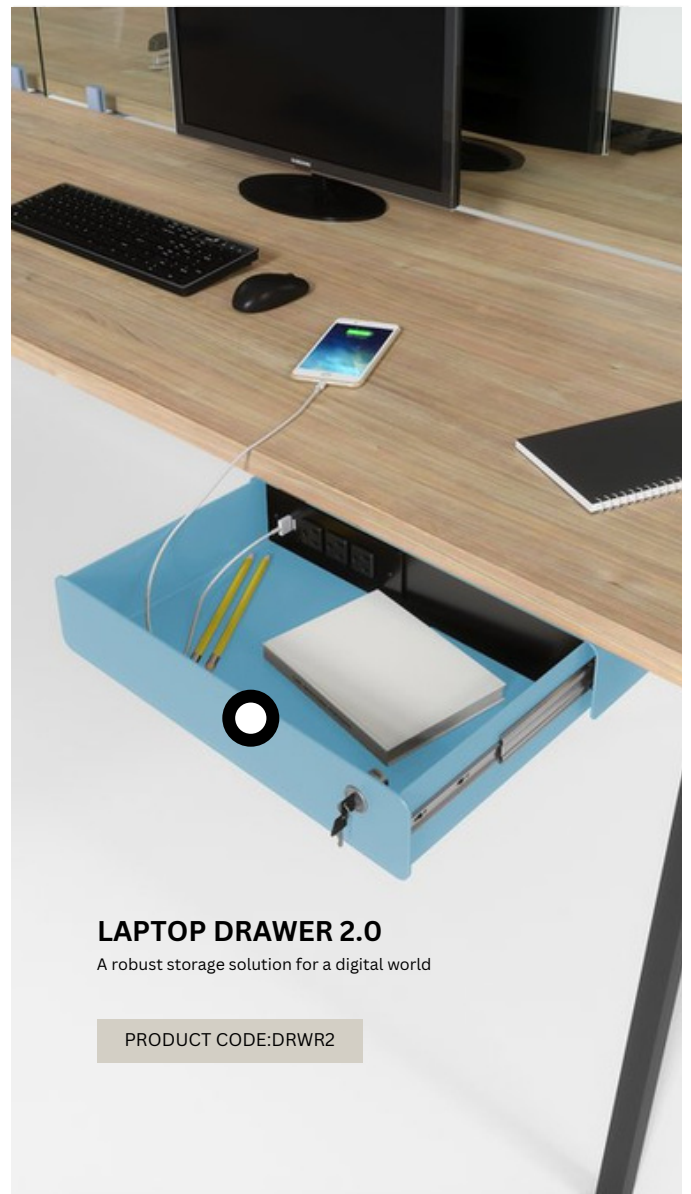
PRODUCT CODE: DRWES



PRODUCT CODE: SC

### SYDECAR

Mobile storage solution



### LAPTOP DRAWER 2.0

A robust storage solution for a digital world

PRODUCT CODE: DRWR2



PRODUCT CODE: ETOTE

## TOTEM ENHANCED

Store, organize & transport items with ease.



**Paper tray insert**  
Fits up legal sized paper.

**Mini-insert**

**Tray / Lid**  
Metal lockable lid secures your items

**Laptop Stand**  
Convert any surface into an ergonomic work space with your laptop stand and cable management insert.

**Wireless Charging lid**  
Small insert comes with optional integrated wireless charging lid.

**TOTem caddy**

The durable TOTem caddy is made from recycled PET felt material. TOTem's adjustable strap lets you carry your tote by hand or shoulder and secures underneath your TOTem when not in use.

**Long-insert**

Use with your laptop riser or as a personal organizer.

## “ The future Workplace

Mobility, flexibility, ergonomics and comfort define our needs in a changing workplace that shifts from the office to the home and everywhere in between. Our new range of solutions suit both situations and seamlessly support our work-styles whatever they may be. An interchangeable kit of parts lets us customize the functions that suit us best. The solution is based around a lockable tote system that slides under the desk or into our custom shelving systems. It can be carried single handedly with our patented handle and shoulder-strap which tucks unobtrusively underneath when not in use. Welcome to the future.



PRODUCT CODE: TOTE

## TOTEM ESSENTIALS


Store, organize & transport items with ease.



FULL SPECS 

**PRODUCT :** DIVYDE 2.0

**ACCESSORIES:** ORGANIZATIONAL FELT INSERTS, (OPTIONAL INSERT WITH CELLULAR CHARGING LID), DETACHABLE PEN CADDY  
**FEATURES:** EASY GRIP HANDLES, DURABLE YET LIGHTWEIGHT STEEL CONSTRUCTION, FITS INTO TOTEM PORTABLE WORKSTATION  
**SPECS:** 19"(L) X 6.4"(W) X 9"(H)

FULL SPECS 


**PRODUCT :** DIVYDE

**ACCESSORIES:** DATA, USB, HDMI CONNECTIONS, OPTIONAL SCREENS- ACRYLIC, GLASS AND FELT  
**FEATURES:** POWER OPTIONS AVAILABLE, CUSTOMIZATION AVAILABLE (100 UNIT MIN.)  
**SPECS:** 23"OR 29"(L) X 6"(W) X 6"(H)  
 OPTIONAL BACKING AT 12.2" HIGH

FULL SPECS 

**PRODUCT :** SYDECAR

**ACCESSORIES:** REMOVABLE TOP UTILITY TRAY, MOVABLE HOOK, ORGANIZATIONAL FELT INSERTS  
**FEATURES:** RECESSED CASTORS, FELT-LINED BOTTOM AND SHELF, BOTTOM CUT-OUT TO LOCK OVER DESK FEET, STURDY STEEL CONSTRUCTION, MADE IN N. AMERICA  
**SPECS:** 16"(L) X 11.75"(W) X 23.33"(H)

FULL SPECS 

**PRODUCT :** VERSA LITE


**ACCESSORIES:** OPTIONAL TOP CUBBY WITH REMOVABLE FELT DRAWER, KEY LOCK  
**FEATURES:** UNIVESAL MOUNTING BRACKET, SMOOTH SLIDE TRACK, STURDY STEEL CONSTRUCTION  
**SPECS:** 16.25"(L) X 11"(W) X 19"(H)

FULL SPECS 

**PRODUCT :** VERSA

 [LEARN MORE](#)

**ACCESSORIES:** DIGITAL OR KEY LOCKS, REMOVABLE TRAY  
**FEATURES:** INTEGRATED POWER, UNIVERSAL MOUNTING BRACKET, TAPERED FRONT, LIGHTWEIGHT STEEL W/DURABLE POWDER COAT FINISH, EASY TO CLEA  
**SPECS:** 18"(L) X 9.5"(W) X 18.06"(H)

FULL SPECS 

**PRODUCT :** ESSENTIALS DRAWER


**ACCESSORIES:** STANDARD KEY LOCK  
**FEATURES:** SIMPLE 4 SCREW INSTALL, SLEEK LOW PROFILE DESIGN, EASILY FITS A 15" LAPTOP, RANGE OF COLOR CUSTOMIZATIONS  
**SPECS:** 19.5" FRONT PANEL (16.25" INTERNAL) W X 10.5"D X 2" H

FULL SPECS 

**PRODUCT :** DRAWER 2.0

 [LEARN MORE](#)

**ACCESSORIES:** OPTIONAL ADAPTER BRACKETS, DUPLEX USB PORTS 2.0, USB-C VENTILATED OPTION, INCORPORATED KEY LOCK  
**FEATURES:** SIMPLE 4 SCREW INSTALL, TRIPLEX SURG PROTECTOR, CUSTOMIZABLE  
**SPECS:** 10"(L) X 15.5"(W) X 3"(H) | 15" L OPTION AVAILABLE

FULL SPECS 

**PRODUCT :** TOTEM ENHANCED

 [LEARN MORE](#)

**ACCESSORIES:** OPTIONAL-LAPTOP RISER, FELT INSERT WITH PHONE CHARGING LID, PAPER TRAY, MOUNTING RAILS  
**FEATURES:** COMES WITH SHOULDER STRAP AND TRAY LID  
**SPECS:**  
 SMALL: 16.6"(L) X 12.7"(W) X 6"(H)  
 MEDIUM: 19.1"(L) X 13.5"(W) X 7.75"(H)  
 DEEP: 19"(L) X 13.5"(W) X 11.75"(H)

FULL SPECS 

**PRODUCT :** TOTEM ESSENTIALS

 [LEARN MORE](#)

**ACCESSORIES:** INSERTS AND DIVIDERS  
**FEATURES:** THERMOFORM PLASTIC MOLDING WITH LID, PORTABLE, MOUNTABLE  
**SPECS:**  
 SHALLOW: 17.25"(L) X 12.75"(W) X 3.5" (H)  
 DEEP: 17.25"(L) X 12.75"(W) X 6"(H)





# SLYDE LOCKERS

*Modular system designed for modern workspaces and hybrid offices*

## ACCESSORIES & FEATURES

- Sleek & modular system
- Personalized & customizable
- Two box sizes and three different heights
- Key, combination, digital, or RFID locking
- Storage for the TOTem Enhanced portable workstation
- Available in laminate or melamine
- Optional mail slot

[FULL SPECS](#)

**WE OFFER A RANGE OF COLOR, MATERIAL, DIMENSION, & FINISH CUSTOMIZATIONS FOR SLYDE LOCKERS.**

[LEARN MORE](#)



# SLYDE LAPTOP LOCKER

*Sleek and secure storage for the modern workplace*

## ACCESSORIES & FEATURES

- Sleek & modular system
- Personalized & customizable
- Key, combination, digital, or RFID locking
- Seamlessly fits most laptop models
- Available in laminate or melamine

**66.6"H (3.7"H/DRAWER) X 17.7"W X 19.7"D**

FULL SPECS 

**WE OFFER A RANGE OF COLOR, MATERIAL, DIMENSION, & FINISH CUSTOMIZATIONS FOR SLYDE LOCKERS.**

# Locker Finishes

## Melamine



D1 - Whitened oak



D2 - Amber oak



D4 - Dark walnut



M1 - White



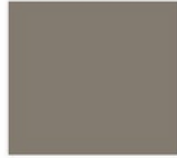
N1 - Dark grey



J4 - Black



N3 - Pearl grey



N2 - Cubanit grey



D5 - Grey wood



D3 - Sand Ash

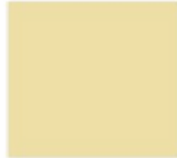
## HPL



H12 - Grey



H13 - Cappuccino



H14 - Light yellow



H15 - Mint colour



H70 - White

## Metal



E - White



M - Metallic



T1 - Dark grey



A - Black



S1 - Deep bronze



ME1 - Dusty rose



ME2 - Avocado green



# EVO SCREEN

*Stylish divider, screen, and storage all in one*

## ACCESSORIES & FEATURES

- Modular and dynamic design
- Durable powder-coat finish
- Single or double-height storage
- Can act as storage for the Slyde TOTem
- Choice of inserts (laminated cubbies, tempered glass, sliding doors, etc.)
- Build-your-own capabilities & endless configurations

[FULL SPECS](#)

**WE OFFER A VARIETY OF COLOR, MATERIAL-FINISH, AND INSERT CUSTOMIZATIONS FOR THE EVO SCREEN**

[LEARN MORE](#)

# ACOUSTIC FABRIC SCREENS

Immerse your workspace in a sea of tranquility and productivity with our cutting-edge acoustic panels and other solutions designed to improve your work environment. Crafted for seamless integration into the modern office, our acoustic products extend beyond traditional barriers.

*\*\*Available in various sizes and colors*



1.



2.



3.



4.

## 1. [FULL SPECS](#) DESK SCREENS

- Chipboard, foam and upholstery
- Fixed to the worktop of the frame of the desk
- Pinnable
- Optional function rail with accessories: pencil case, shelf, monitor holder and organizer
- Compatible with desks and benches

## 2. [FULL SPECS](#) FREE STANDING

- Panel - upholstered, Sonic technology structure with A-class acoustics certificate, pinnable
- Zip fastener - does not unzip
- Frame - steel pipe
- Filling - acoustic nonwoven with high sound absorption and dispersion properties
- Foot - powder-coated metal
- Rotation 360° - each panel rotates independently

## 3. [FULL SPECS](#) WALL PANELS

- Sonic technology with Class A certificate guarantees panels' acoustic properties
- Acoustic nonwoven filling and fabric cover are responsible for the high sound absorption capacities
- Chipboard frame helps the panels keep their shape while hanging
- The wide range of available shapes makes it easy to fit the panels into an arrangement or design
- Designed for offices, universities, schools, libraries and other public spaces

## 4. [FULL SPECS](#) CEILING PANELS




# SLYDE BOOTHS

*Office Phone Booths. Available in 3 sizes. Fully customizable.*

## ACCESSORIES & FEATURES

- Enhanced ergonomic and comfort
- Advanced lighting and ventilation
- Good sound absorption and insulation
- Design and wide customization possibilities

[FULL SPECS](#) 

**WE OFFER A VARIETY OF COLOR, MATERIAL-FINISH, AND INSERT CUSTOMIZATIONS FOR SLYDE BOOTHS.**

[LEARN MORE](#) 



PRODUCT CODE: KOMPACT



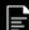
# KOMPACT

*Flexible & Sustainable Storage System*

## ACCESSORIES & FEATURES

- Variety of customizations and configurations
- High quality plywood or laminate material
- Pre-slotted grooves for storing any sized

TOTem portable workstation

FULL SPECS 

**WE OFFER A VARIETY OF COLOR, MATERIAL-FINISH, AND INSERT CUSTOMIZATIONS FOR THE KOMPACT**

# Locker Finishes

## Melamine



D1 - Whitened oak



D2 - Amber oak



D4 - Dark walnut



M1 - White



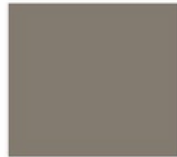
N1 - Dark grey



J4 - Black



N3 - Pearl grey



N2 - Cubanit grey



D5 - Grey wood



D3 - Sand Ash

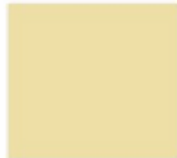
## HPL



H12 - Grey



H13 - Cappuccino



H14 - Light yellow



H15 - Mint colour



H70 - White

## Metal



E - White



M - Metallic



T1 - Dark grey



A - Black



S1 - Deep bronze



ME1 - Dusty rose



ME2 - Avocado green



# felt



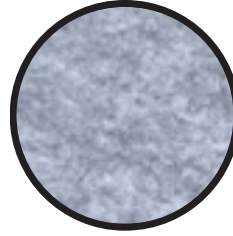
**Marble**

OF-MBL



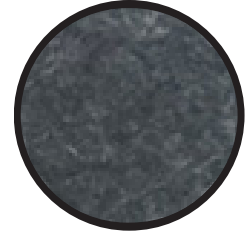
**Sky**

OF-SKY



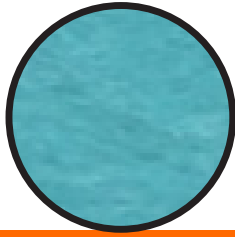
**Slyde Grey**

OF-SLY



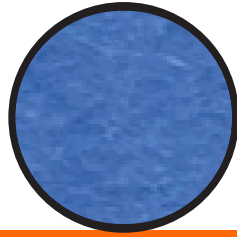
**Slate**

OF-SLA



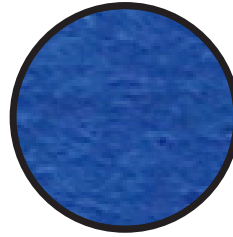
**Turquoise**

OF-TUR



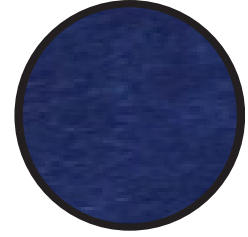
**Cobalt**

OF-COB



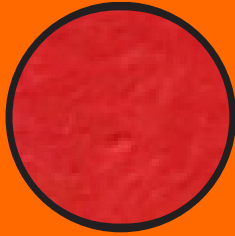
**Royale**

OF-ROY



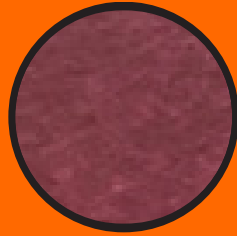
**Marine**

OF-MAR



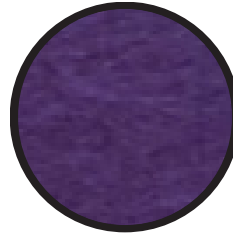
**Ruby**

OF-RUB



**Cherry**

OF-CHR



**Amethyst**

OF-AME



**Black**

OF-BLK



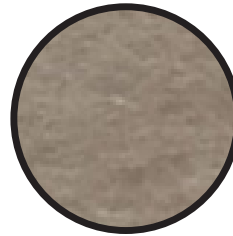
**White**

OF-WH



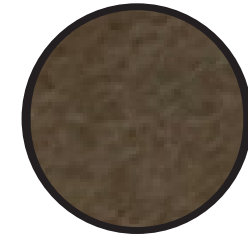
**Oatmeal**

OF-OAT



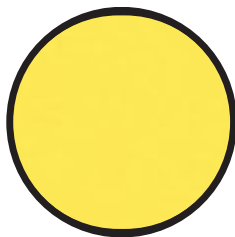
**Mocha**

OF-MOC



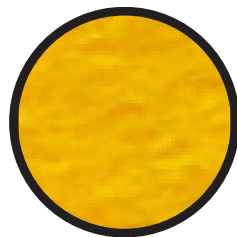
**Coco**

OF-COCO



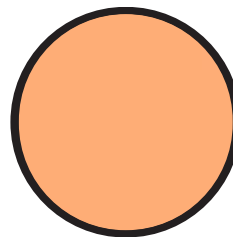
**Sunshine**

OF-SUN



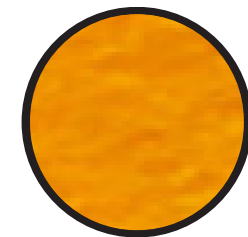
**Saffron**

OF-SAF



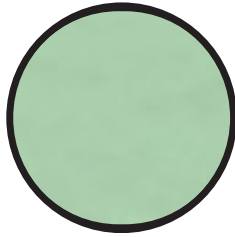
**Salmon**

OF-SAL



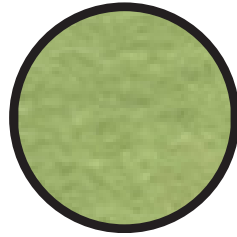
**Sunkiss**

OF-SKISS



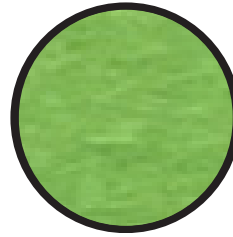
**Seafoam**

OF-SEA



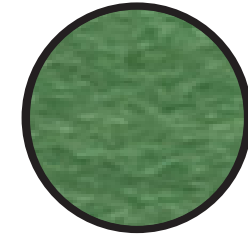
**Sage**

OF-SAGE



**Lime**

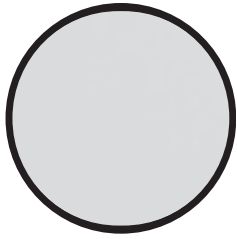
OF-LI



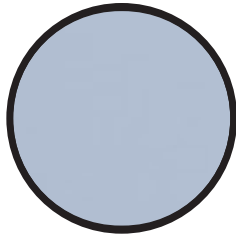
**Hunter**

OF-HUN

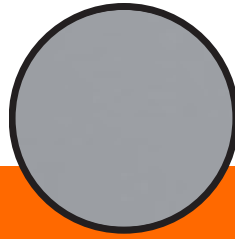
# metal



**Silver**  
ME-MBL



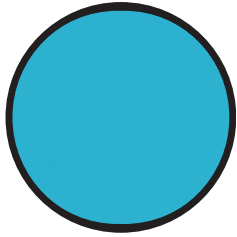
**Sky**  
ME-SKY



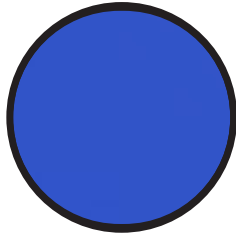
**Grey**  
ME-SLY



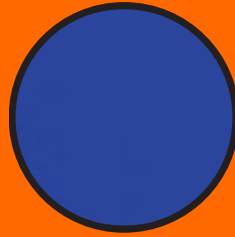
**Slate**  
ME-SLA



**Turquoise**  
ME-TUR



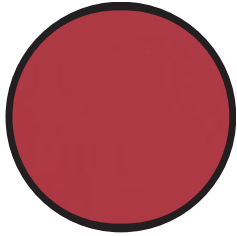
**Cobalt**  
ME-COB



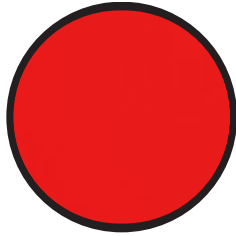
**Royale**  
ME-ROY



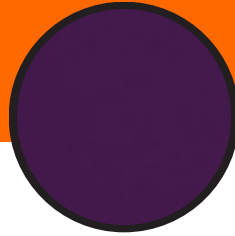
**Marine**  
ME-MAR



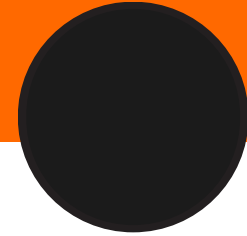
**Ruby**  
ME-RUB



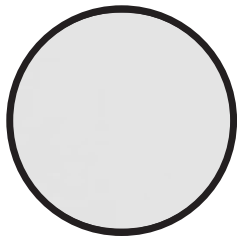
**Cherry**  
ME-CHR



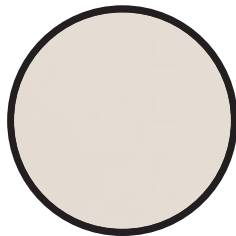
**Amethyst**  
ME-AME



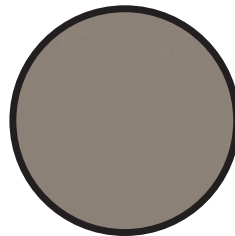
**Black**  
ME-BLK



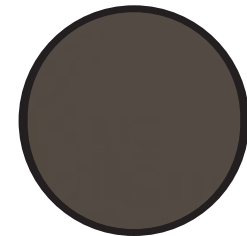
**White**  
ME-WH



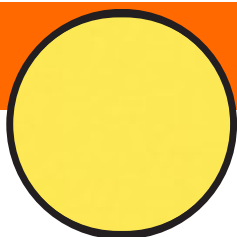
**Oatmeal**  
ME-OAT



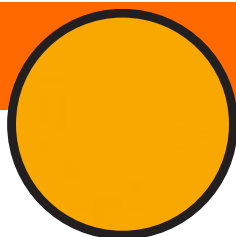
**Mocha**  
ME-MOC



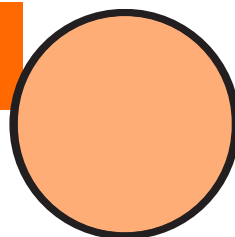
**Coco**  
ME-COCO



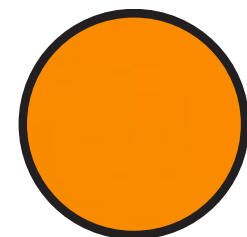
**Sunshine**  
ME-SUN



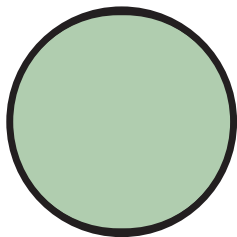
**Saffron**  
ME-SAF



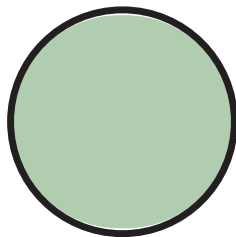
**Salmon**  
ME-SAL



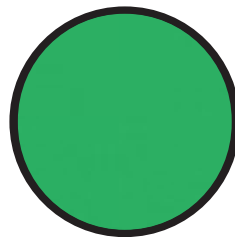
**Sunkiss**  
ME-SKISS



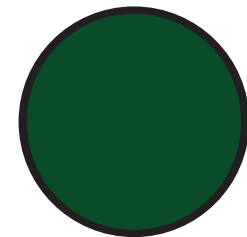
**Seafoam**  
ME-SEA



**Sage**  
ME-SAGE



**Kelly**  
ME-KEL



**Hunter**  
ME-HUN