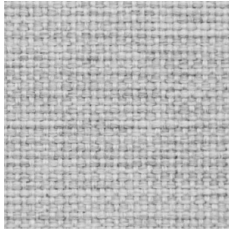
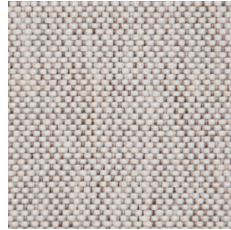


# Free-Standing Acoustic Panel Finish Guide

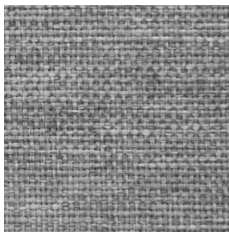
## Berta



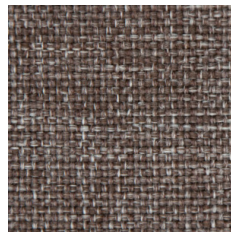
AD3



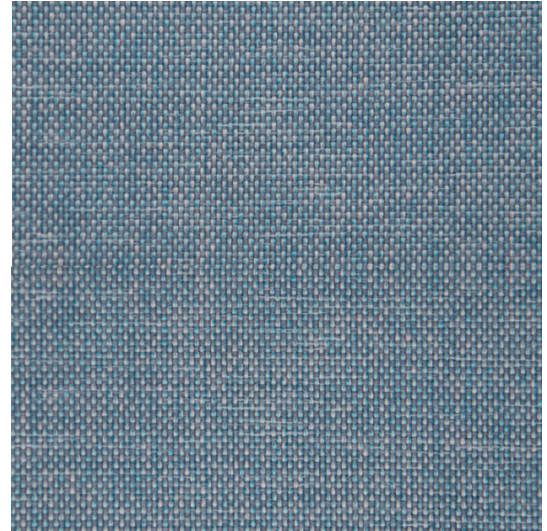
AD8



AD2



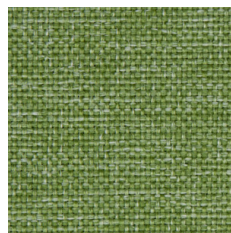
AD5



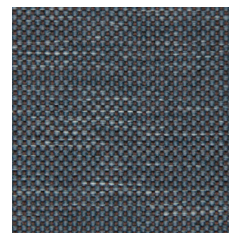
AD6



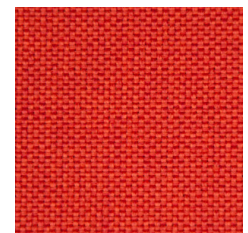
AD7



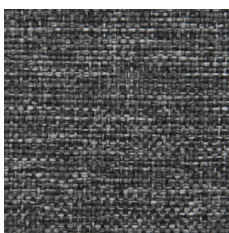
AI8



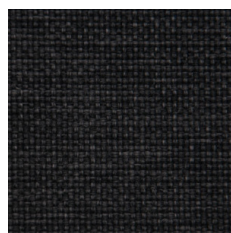
AD4



AI5



AD1

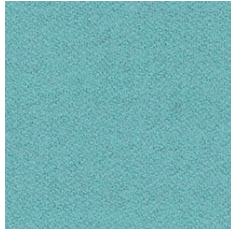


AD0

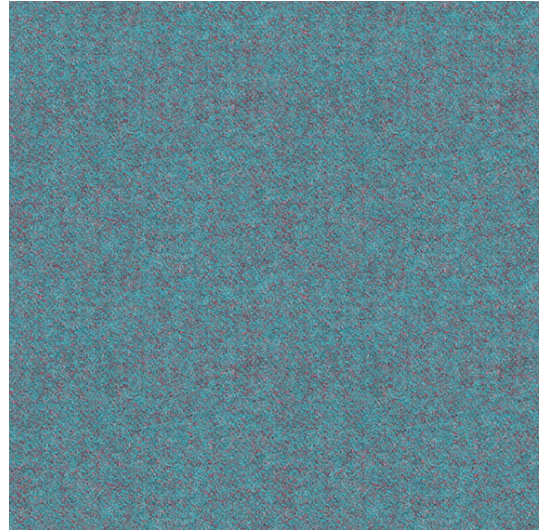
# Synergy



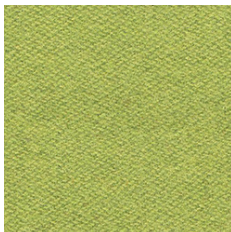
S45



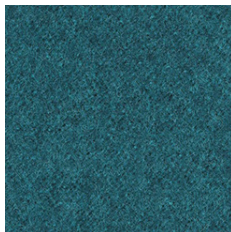
S55



S56



S46



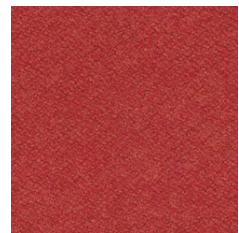
S53



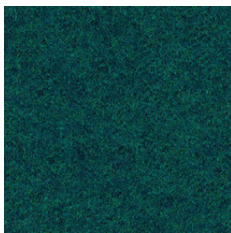
S62



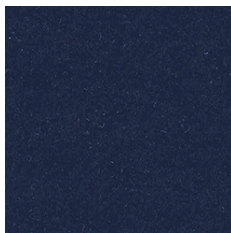
S84



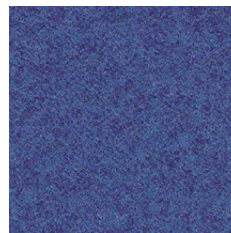
S85



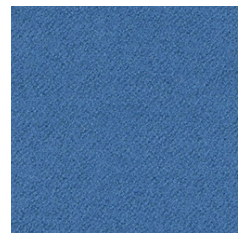
S50



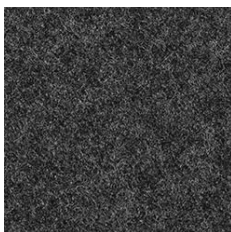
S69



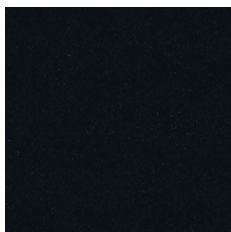
S68



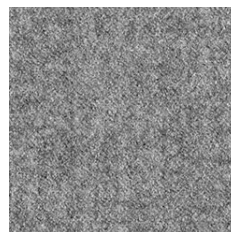
S63



S17



S27



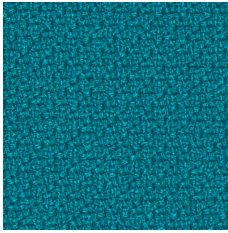
S16



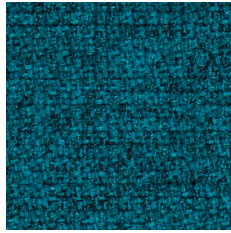
S08



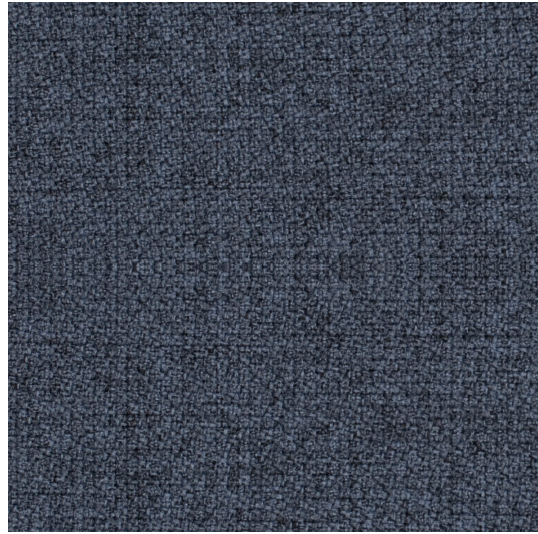
# Step



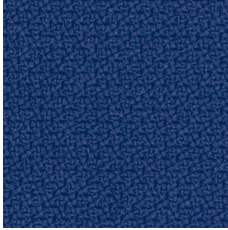
L03



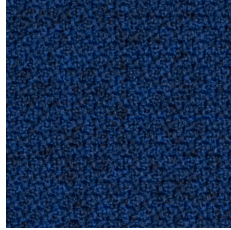
L02



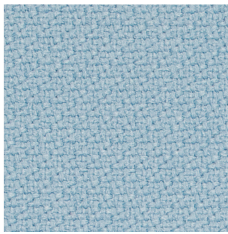
L14



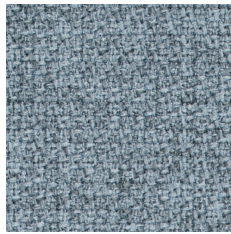
L05



L04



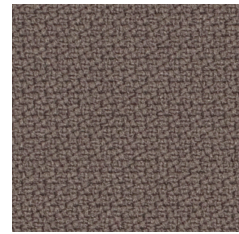
L07



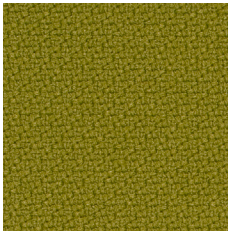
L06



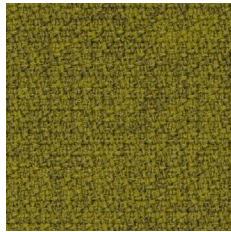
L15



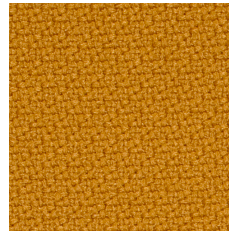
L21



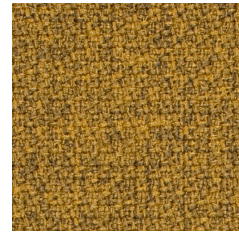
L09



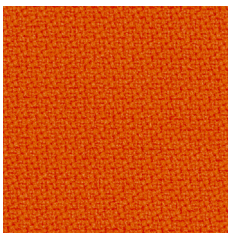
L08



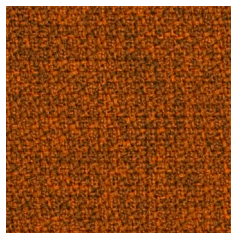
L17



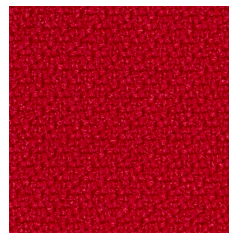
L16



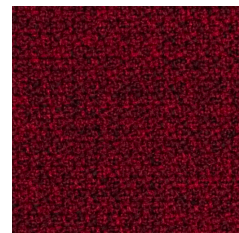
L11



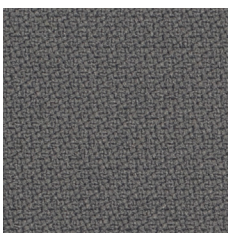
L10



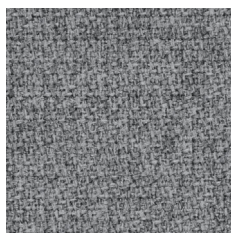
L19



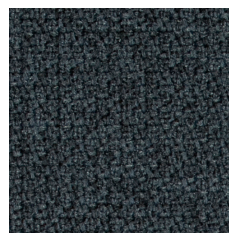
L18



L13



L12



L20



L01

## Berta

EN

---

**Composition**  
100% Polyester

---

**Weight**  
302 g/m<sup>2</sup>

---

**Abrasion resistance**  
100.000 Martindale cycles

---

**Flammability**  
BS EN 1021 - 1 (cigarette)  
BS EN 1021 - 2 (match)

---

**Light fastness**  
6 (EN ISO 105 - B02)  
(EN ISO 105 - A01)

---

**Fastness to rubbing**  
5-4, dry: 5 (ISO 105 - X12)

---

## Synergy

EN

---

**Composition**  
95% Virgin Wool, 5% Polyamide

---

**Weight**  
400 g/m<sup>2</sup>

---

**Abrasion resistance**  
100.000 Martindale cycles

---

**Flammability**  
BS EN 1021 - 1 (cigarette)  
BS EN 1021 - 2 (match)  
BS 7176 Low Hazard  
UNI 9175 Classe 1 IM

---

**Light fastness**  
5 (EN ISO 105 - B02)

---

**Fastness to rubbing**  
wet: 4; dry: 4 (ISO 105 - X12)

---

## Step

EN

---

**Composition**  
100% Trevira CS®  
Flame Retardant Polyester

---

**Weight**  
470 g/m<sup>2</sup>

---

**Abrasion resistance**  
100.000 Martindale cycles

---

**Flammability**  
BS EN 1021 - 1 (Cigarette)  
BS EN 1021 - 2 (Match)  
BS 5852 Part 1 0,1 Cigarette & match  
Crib 5 (BS 5852 part II)  
BS 7176 Medium Hazard  
UNI 9175 & UNI 9175/FA1 Classe 1 IM  
IMO MSC 307(88) Annex 1 part 8  
MED Certificate IMO  
DIN 4102 B1  
NF-P-92-503-512 M1  
ÖNORM B 3825-B1-3800-Q1 UK  
FAR/JAR 25.853 (a) (i) (ii)  
AM 18 - NF D 60-013 - (only for fabric)  
CA TB 117-2013  
DIN EN 13501-1 B-s1, d0

---

**Light fastness**  
5-7 (EN ISO 105 - B02)

---

**Fastness to rubbing**  
wet: 4-5; dry: 4-5 (ISO 105 - X12)

---



# PET Felt



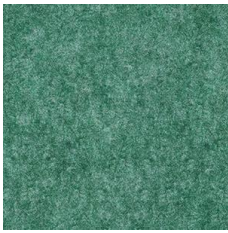
B18 - Grey



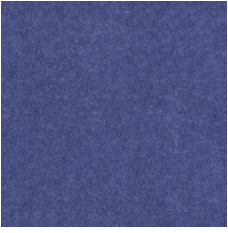
B19 - Sand



B52 - Dark pink



B44 - Green



B51 - Blue



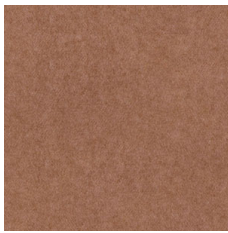
B53 - Chestnut



B54 - Dark grey



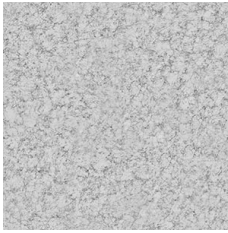
B55 - Lime



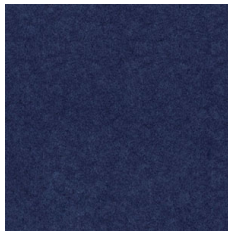
B56 - Coral pink



B57 - Light beige



B58 - Light grey



B50 - Dark blue

