




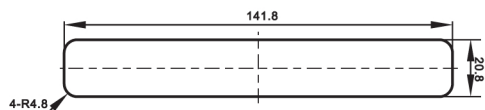
Treatment of some common problems

Problem	Primary cause	Way to solve the problem
When input the password, alarm twice di..di.. Mean while   twinkle one time	Too low voltage	Replace batteries
When input the password, alarm di... meanwhile signal  is on, lock cannot be opened	Knob is not in the right position	Turn knob in the right position
Touch button without sound, lock can be opened	Buzzer broken	Change buzzer

Fixing hole size & installation

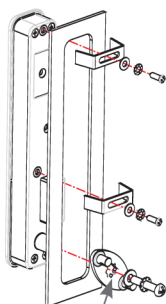
► Fixing hole size

Unit:mm



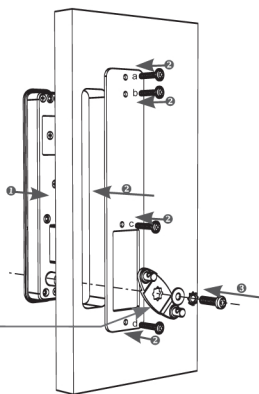
► Installation

(1) Steel panel



(1) Wood panel

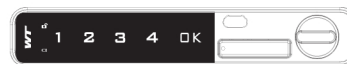
* Suitable thickness : 12~20mm

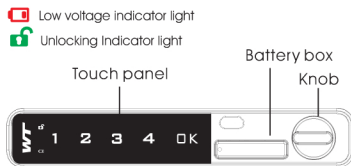


Parts selection



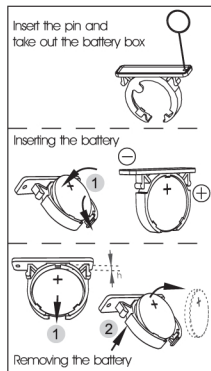
Work Manual





How to change the button battery

- 1> Put the needle into this hole vertically.
- 2> Press the needle to make the battery holder come out
- 3> Place the cathode side of the button battery inward of the battery holder, then put the battery holder into the lock body .



How to operate



Lock & unlock

■ Unlock

- 1> Input factory default password "1234+OK", or Input factory default management password "4321+OK"
- 2> Buzzer gives out a long di... sound
- 3> When the green indicator light is on
- 4> Rotate the knob within 3 seconds to open the lock

■ Lock

Rotate back the Knob to lock position

* Note:

- When password is wrong alarming sound di...di...di... 3 times
- When lock shows this signal means low voltage.
- when input management password to unlock, user password will be changed back to default 1234

Setting

1- Change password

- 1> Input current user password +OK or management password+OK, buzzer gives out a long di sound, will be on
- 2> Press OK at least 2 seconds, flash
- 3> Input new password, press OK, when you heard a long di sound means password already been changed.

* Note:

- Password can be consisted of 4-15 digits, pls note that the management password can not be the same as user password.

2- Turn on public mode, set temporary password

► Turn on public mode

- 1> Input current management password + OK, buzzer gives out a long di... Sound, unlocking indicator light is on
- 2> Press OK at least 2 seconds, unlocking indicator light twinkle, press OK again.
- 3> Input "4 4", press OK, when you heard a long di... sound, means public mode already been set.

► Set temporary password

- 1> Press OK. Unlocking indicator light will twinkle
- 2> Input the new password consisted of 4-15 digits
- 3> press OK, hear a long di, unlocking indicator light is on, temporary password already been set.

* Note:

- flash one time every 3 seconds means the lock has already be taken
- Temporary password can be used for 1 time only

3- Turn off public mode

- 1> Input current management password + OK, buzzer gives out a long di sound, unlocking indicator light is on
- 2> Press OK at least 2 seconds, unlocking indicator light twinkle, press OK again.
- 3> Input "4 3", press OK, when you heard a long di... Sound, means public mode already been turned off.

4- Turn on/off Fake Pin code function

- 1> Input current management password + OK, buzzer gives out a long di sound, unlocking indicator light is on
- 2> Press OK at least 2 seconds, unlocking indicator light twinkle, press OK again.
- 3> Input "4 2", press OK, when you heard a long di sound means Fake Pin code mode already been turned on.
Input "4 1", press OK, when you heard a long di sound means Fake Pin code mode already been turned off.

* Note:

- Introduced with Anti-Theft Technology and Fake PIN password function you can input any code(s) before or after the real password to prevent the real password being peeped. Maximum 16 digits.

Features

- 1> Decode: When password been forgotten, you can get the decode number by providing the code on the lock body to the distributor to decode. The password will be changed back to the original management password "4321", user password "1234"
When user password been forgotten, you can input master password, the user password will be changed back to the original user password "1234".
- 2> Introduced with Anti-Theft Technology and Fake PIN password function; you can input any code(s) before or after the real password to prevent the real password being peeped. Maximum 16 digits
- 3> Auto-alarm will be activated when input wrong password 4 times and the lock will be died for 60 seconds.
- 4> Automatic power shortage prompts (When lock show this signal). The lock cannot be operated when the voltage is very low
- 5> Equipped with 3V Cr2032 batteries, last password will not be lost after changing the battery.